



# More

Extendable table with four legs base in lacquered steel. Top available in melamine, lacquered wood, Fenix, crystal or crystalceramic.

For the 140x90 versions available top in veneered lacquered finish flamed walnut.



## Finishing and Materials

### Base



White Steel



Sand Steel



Grafite Steel



Brown Steel



Aluminium

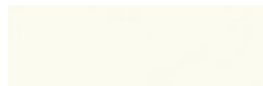
### Top



Melamine  
7 colors



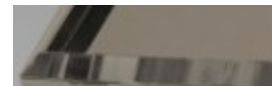
Laquered MDF  
4 colors



White Fenix



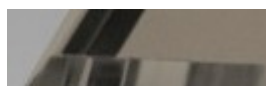
Black Fenix



Glossy Sand Glass



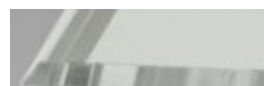
Extraclear Glossy White Glass



Matt Sand Antiscratch Glass



Matt Graphite Antiscratch Glass



Extra Clear Matt White Antiscratch Glass



Lead Crystalceramic



Charcoal Savoia Crystalceramic



Cement Savoia Crystalceramic



Emperador Marble Crystalceramic



Oxide White Crystalceramic



Oxide Sand Crystalceramic



Corten Crystalceramic



Veneered Flamed Walnut

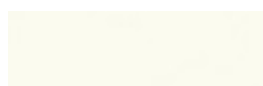
### Extensions



Melamine  
7 colors



Laquered MDF  
4 colors



White Fenix

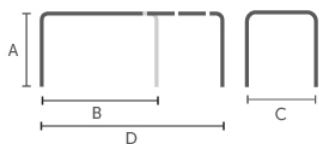


Black Fenix



Veneered Flamed Walnut

## Dimensions



## Volumetric Details

**Weight** 66

**Volume** 0.27 mc

**Package** 4

Dimension	A	B	C	D
	(cm)	(cm)	(cm)	(cm)
	(inch)	(inch)	(inch)	(inch)
<b>100x70</b>	75	100	140	70
	(29.5)	(39.4)	(55.1)	(27.6)
<b>120x80</b>	75	120	170	80
	(29.5)	(47.2)	(66.9)	(31.5)
<b>140x90</b>	75	140	200	90
	(29.5)	(55.1)	(78.7)	(35.4)
<b>L 140x90</b>	75	140	230	90
	(29.5)	(55.1)	(90.6)	(35.4)
<b>XL 110x80</b>	75	110	245	80
	(29.5)	(43.3)	(96.5)	(31.5)
<b>XL 140x90</b>	75	140	290	90
	(29.5)	(55.1)	(114.2)	(35.4)